



Kansas Wheat Variety Guide 2023

MF991 • Wheat Ratings

Kelsey Andersen Onofre
Plant Pathologist

Erick D. De Wolf
Plant Pathologist

Romulo Lollato
Agronomist

R. Jeff Whitworth
Entomologist

Variety selection is one of the most important decisions a wheat grower makes. This choice profoundly influences the potential wheat crop's productivity. Agronomic characteristics, such as height, acid soil tolerance, and maturity, determine how well a variety is adapted for a region or desired cropping system. Selecting a good variety also influences how well the crop tolerates drought or resists diseases and insects.

The agronomic characteristics and resistance ratings in this publication summarize results of multiple field and greenhouse tests by public and private wheat researchers.

The ratings are intended to help producers select wheat varieties according to their specific needs. The paragraphs below contain suggestions for using this information to minimize the potential for production problems and resulting yield losses. Growers should consult the latest K-State wheat performance test report for additional information about varieties that have yielded well in their area.

Although great efforts were made to confirm the accuracy of these ratings, no guarantee can be made that the information is without error. A variety's agronomic characteristics are generally stable but can be influenced by unanticipated interactions with production practices or environment. Disease and pest reactions are influenced by regional populations of the pathogens or insects and may vary between years.

Although great efforts were made to confirm the accuracy of these ratings, no guarantee can be made that the information is without error. A variety's agronomic characteristics are generally stable but can be influenced by unanticipated interactions with production practices or environment. Disease and pest reactions are influenced by regional populations of the pathogens or insects and may vary between years.

How to Use the Variety Ratings

Evaluate how well a variety is adapted for your area. The agronomic characteristics of a wheat variety influence its ability to provide consistent, high yields. The importance of characteristics such as relative maturity, height, and drought tolerance vary regionally in Kansas. For example, varieties successful in western Kansas tend to have a medium or medium-late maturity and medium height or taller, as well as good drought tolerance (Table 1). In contrast, wheat varieties with early or medium-early maturity, medium or shorter height, and good acid soil tolerance are most successful in central Kansas. Information about the characteristics of

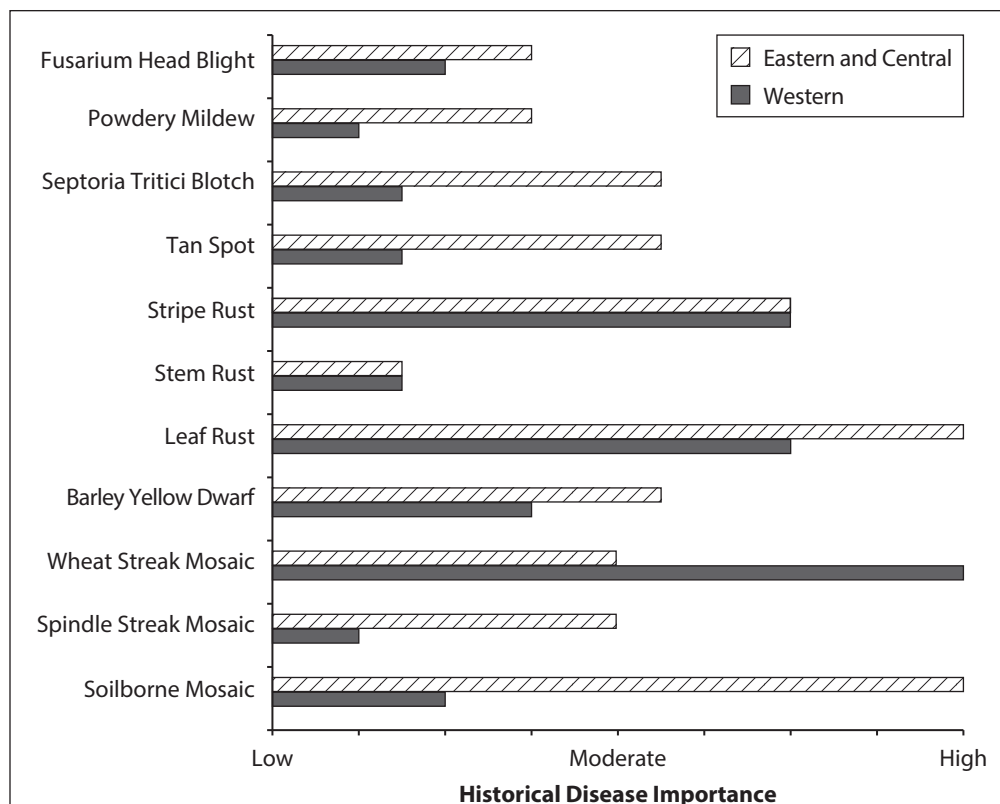


Figure 1. Regional importance of wheat diseases in Kansas. *The importance of wheat diseases is based on their potential to cause yield loss and how often it reaches damaging levels in different regions of the state. The relative importance of the diseases is the product of historical records of disease losses in Kansas and expert opinion by wheat disease specialists. Not all diseases and insect pests are considered in the figure. Growers may need to adjust their priorities based on previous crop production practices on their farms.*

wheat varieties can be found in the variety profiles and the overall listing of agronomic characteristics (Appendix 2).

Determine which diseases are most important. The importance of any disease or insect pest depends on its potential to cause yield loss and how often it reaches damaging levels within a given region of the state. In western Kansas, wheat streak mosaic, leaf rust, and stripe rust are among the most damaging and common diseases (Figure 1). These diseases should be top priorities when selecting wheat varieties for that region. In eastern and central Kansas, the environment is often more conducive for disease development, and additional factors should be considered when selecting a variety. Important diseases to consider in these regions of Kansas include soilborne mosaic, spindle streak mosaic, barley yellow dwarf, leaf rust, stripe rust, tan spot, and Septoria tritici blotch.

It may be helpful to consider a disease resistance summary that combines the historical estimates of regionally important diseases with the variety disease ratings (Table 2). Varieties with genetic resistance to historically important diseases are considered above average, compared to more susceptible varieties. Detailed information about

a variety's disease and insect reactions can be found in the variety profiles and the overall listing of disease and insect reactions (Appendix 1).

Determine if an herbicide resistant variety is necessary. Some producers may select varieties with either Clearfield or CoAXium technologies to manage weed pressure. Additional information about varieties with these technologies can be found in Appendix 2 and 3.

Table 1. *Agronomic characteristics of wheat varieties that were successful in Kansas historically.*

Characteristic*	Eastern and Central Kansas	
	Eastern and Central Kansas	Western Kansas
Maturity	Medium or earlier	Medium-late or earlier
Height	Medium or shorter	Medium or taller
Drought tolerance	Moderately good or good	Good or excellent
Straw strength	Average or better	Average or better
Acid soil tolerance	Moderately tolerant or better	Generally not applicable

* The agronomic characteristics presented here are based on historical records of varieties that occupied 5 percent or more of the acres within a region during the last 20 years. Varieties with these characteristics are most likely to provide consistent, high yields in a given region of the state.

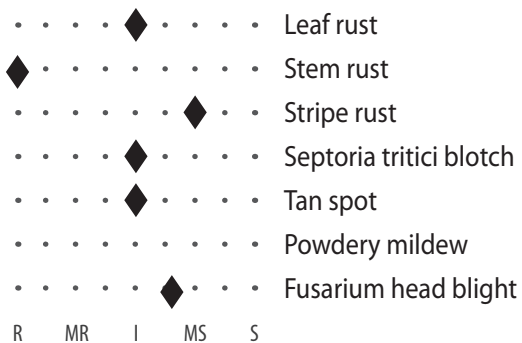
Table 2. Experimental wheat disease resistance summary. *The wheat disease resistance summary combines resistance ratings for multiple diseases. It weights each disease relative to its historical regional importance in Kansas. Varieties with genetic resistance to the historically important diseases within a region are ranked above average relative to more susceptible varieties. The summary is intended to facilitate comparisons among varieties. The more complete lists of disease and insect ratings (Appendix 1) should be consulted after narrowing the list of potential varieties.*

Disease Resistance Grouping	Eastern and Central			Western		
Above Average: Varieties have moderate or high levels of genetic resistance to most diseases common in this region	AP Bigfoot	KS Providence	SY Wolf	Canvas	KS Dallas	Oakley CL
	Bob Dole	LCS Chrome	WB4269	Doublestop CL Plus	KS Silverado (W)	Smith's Gold
	Butler's Gold	Rockstar	WB4523	Guardian	Larry	SY Wolf
	Doublestop CL Plus	Showdown	WB4699	Joe (W)	LCS Chrome	Tatanka
	Gallagher	Smith's Gold	Zenda			
	Green Hammer	Strad CL Plus				
Average: Varieties have moderate or high levels of genetic resistance to some of the diseases common in this region	AG Icon	KanMark	LCS Revere	AG Icon	KS Hamilton	SY Monument
	AM Cartwright	KS Hatchett	SY Wolverine	AP Bigfoot	KS Hatchett	SY Rugged
	AP EverRock	Larry	Tatanka	AP Roadrunner	KS Territory	SY Wolverine
	AP Roadrunner	LCS Julep	Uncharted	Danby (W)	KS Western Star	T158
	Everest		WB4458	KanMark	LCS Revere	TAM 114
				KS Big Bow (W)		Whistler
Below average: Varieties are susceptible to many of the diseases common in this region	AP503 CL2	LCS Valiant	WB4515	Antero (W)	High Country	WB4422
	LCS Mint	T158	WB-Grainfield	Avery	Langin	WB-Grainfield
	LCS Steel AX	WB4422	Winterhawk	Brawl CL Plus	LCS Mint	Winterhawk
				Byrd	LCS Valiant	

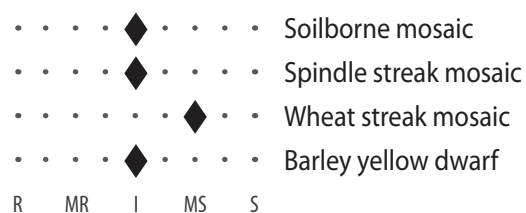
(W) = White wheat varieties

AP Bigfoot

Fungal diseases

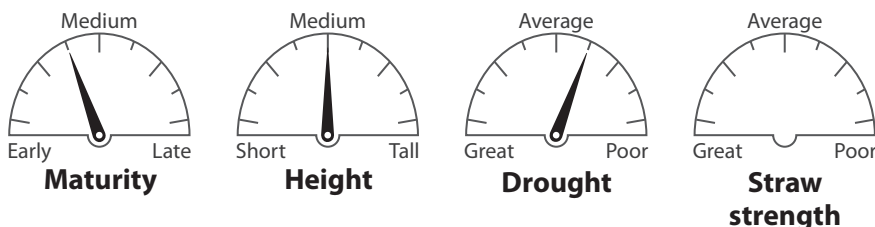


Viral diseases



R = Resistant; MR = Moderately resistant; I = Intermediate; MS = Moderately susceptible; S = Susceptible

Agronomic characteristics



Pedigree: TAM 112, SY Wolf, and a Colorado experimental line (COO4393).

Adaptation: Primarily western Kansas, has the potential to move into central Kansas.

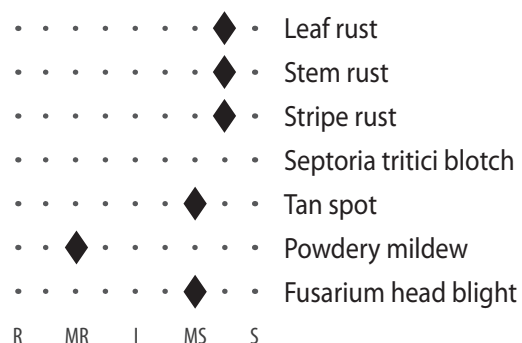
Strengths: Good acid soil tolerance, good stem rust and intermediate leaf rust resistance.

Weaknesses: Susceptible to Hessian fly, Fusarium head blight (head scab), and stripe rust. Intermediate soilborne mosaic resistance.

Comments: A medium-short, medium-early maturing variety. Its pedigree suggests it should have good drought tolerance. Initially released as a widely adapted variety based on Syngenta's data; however, its yield within K-State testing has been below average.

Avery

Fungal diseases

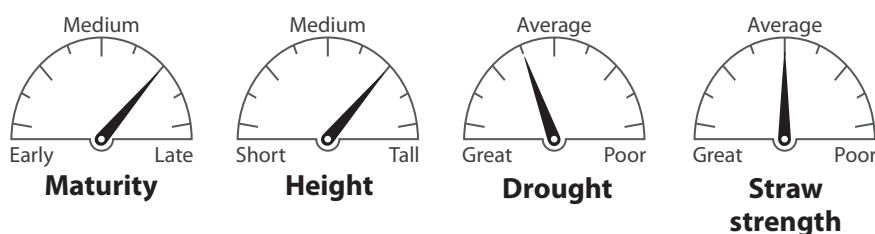


Viral diseases



R = Resistant; MR = Moderately resistant; I = Intermediate; MS = Moderately susceptible; S = Susceptible

Agronomic characteristics



Pedigree: Byrd and TAM 112

Adaptation: Western Kansas.

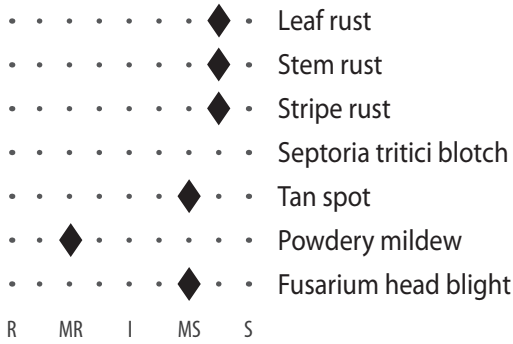
Strengths: Drought tolerance, intermediate resistance to wheat curl mite and greenbug. Good winterhardiness and milling and baking characteristics.

Weaknesses: Susceptible to all rust diseases, intermediate straw strength.

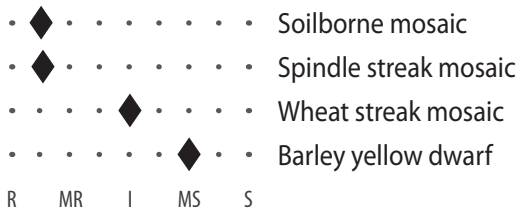
Comments: Slightly taller, later, and better yield potential than Byrd. Will likely need a fungicide to protect yield in years when rust diseases are a problem. Resistance to wheat curl mite could reduce the risk of severe wheat streak mosaic virus.

Byrd

Fungal diseases

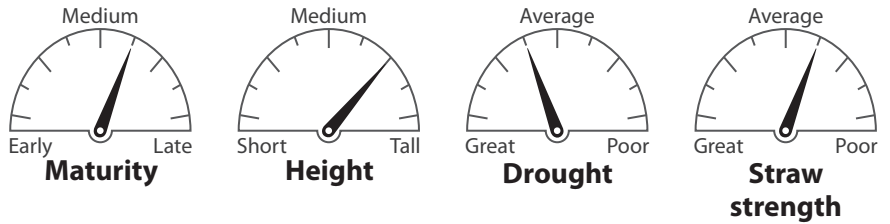


Viral diseases



R = Resistant; MR = Moderately resistant; I = Intermediate; MS = Moderately susceptible; S = Susceptible

Agronomic characteristics



Pedigree: TAM 112, CSU experimental lines, Ike, and Halt.

Adaptation: Western Kansas.

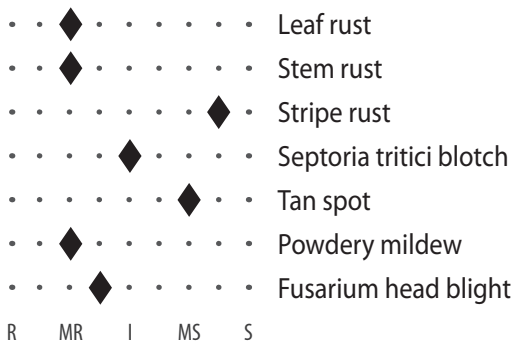
Strengths: Good drought tolerance, good yield potential, good milling and baking characteristics, intermediate resistance to wheat curl mite and wheat streak mosaic.

Weaknesses: Average test weight and straw strength. Susceptible to stripe rust, leaf rust, and stem rust.

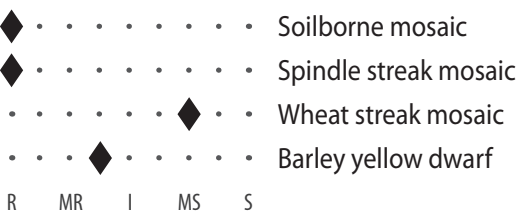
Comments: Drought tolerance is key to the success of this variety. Highly susceptible to rust diseases. Foliar fungicides may be needed to maintain its yield potential. Smaller seed size than many varieties. May require adjustments in planting rate to avoid plant populations that are too high.

Everest

Fungal diseases

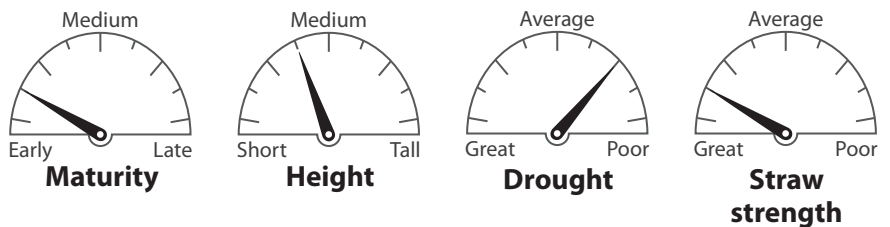


Viral diseases



R = Resistant; MR = Moderately resistant; I = Intermediate; MS = Moderately susceptible; S = Susceptible

Agronomic characteristics



Pedigree: Pioneer experimental lines with the white wheat Betty.

Adaptation: Central and eastern Kansas.

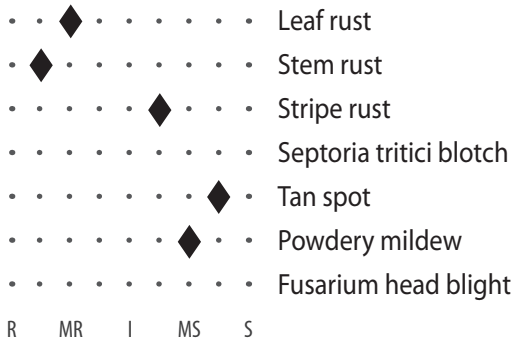
Strengths: Resistance to Hessian fly, moderate resistance to barley yellow dwarf and Fusarium head blight, acid soil tolerance, excellent straw strength.

Weaknesses: Susceptible to stripe rust, poor milling and baking characteristics.

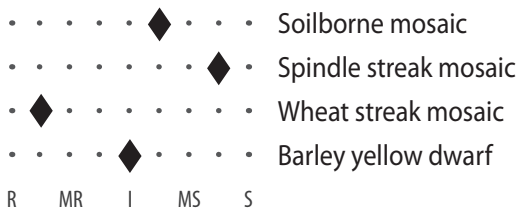
Comments: A medium to medium-short variety with early maturity. Fall tiller formation is important to ensure yield potential. Resistance to Fusarium head blight makes it a great option to follow corn in central and eastern Kansas.

KS Dallas

Fungal diseases

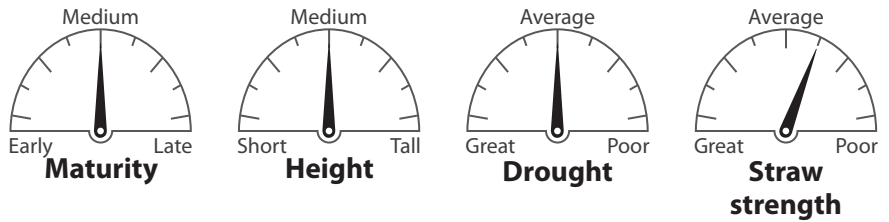


Viral diseases



R = Resistant; MR = Moderately resistant; I = Intermediate; MS = Moderately susceptible; S = Susceptible

Agronomic characteristics



Pedigree: KS08HW112-6, TX03A0148, and Danby TR.

Adaptation: Western Kansas.

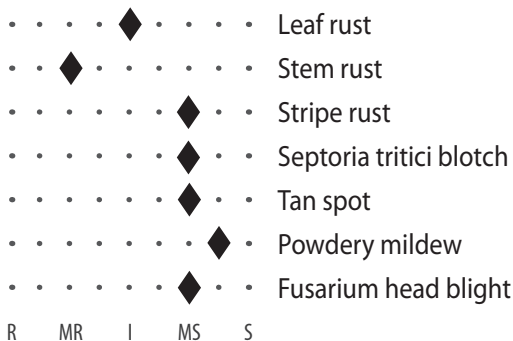
Strengths: Good yield potential, drought tolerance, wheat streak mosaic resistance up to 70°F (WSM2 gene), medium-long coleoptile.

Weaknesses: Susceptible to Hessian fly, moderately susceptible to stripe rust, average straw strength.

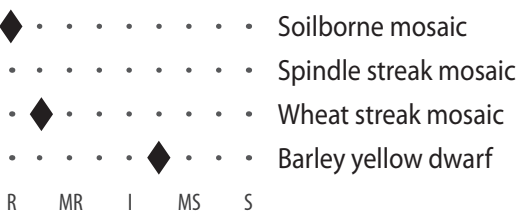
Comments: KS Dallas has a strong yield record and medium height and maturity. This variety could be a replacement for Oakley CL, with enhanced wheat streak mosaic virus and intermediate Triticum mosaic virus resistance. We expect good milling and baking qualities from KS Dallas.

KS Hamilton

Fungal diseases

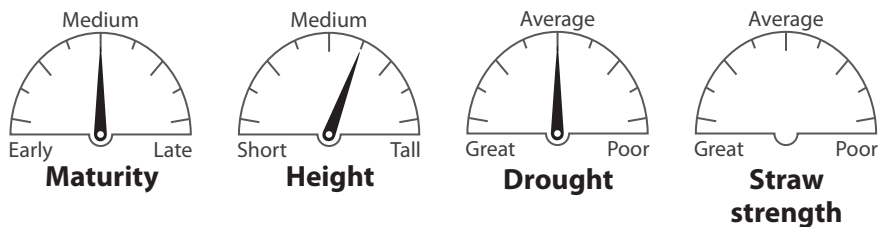


Viral diseases



R = Resistant; MR = Moderately resistant; I = Intermediate; MS = Moderately susceptible; S = Susceptible

Agronomic characteristics



Pedigree: KS08HW176-4//Bill Brown.

Adaptation: Western Kansas and eastern Colorado.

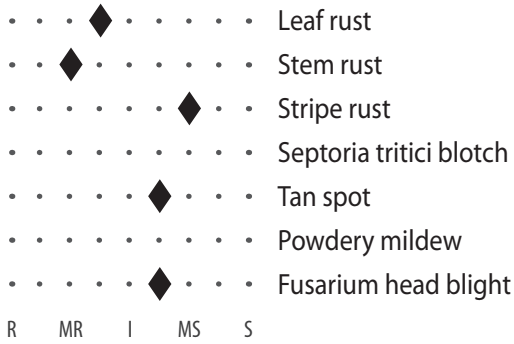
Strengths: High yield potential, good tillering potential; and good wheat streak mosaic virus, soilborne mosaic virus, and Hessian fly resistance. Intermediate leaf rust resistance.

Weaknesses: Intermediate acid soil tolerance, intermediate standability, moderately susceptible to stripe rust.

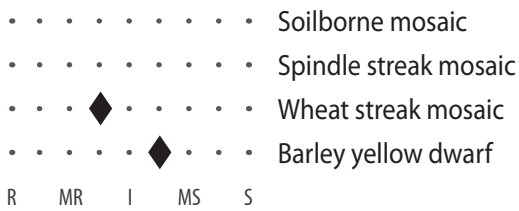
Comments: Similar to KS Dallas, KS Hamilton brings superior wheat streak mosaic resistance up to 70°F. This variety is medium maturity with acceptable milling and baking qualities.

KS Territory

Fungal diseases

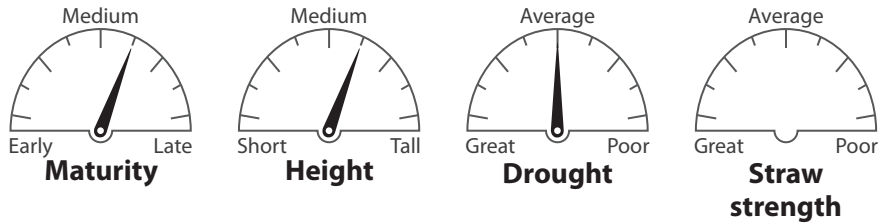


Viral diseases



R = Resistant; MR = Moderately resistant; I = Intermediate; MS = Moderately susceptible; S = Susceptible

Agronomic characteristics



Pedigree: KS11HW15/TX10A001006.

Adaptation: Western third of Kansas into Colorado.

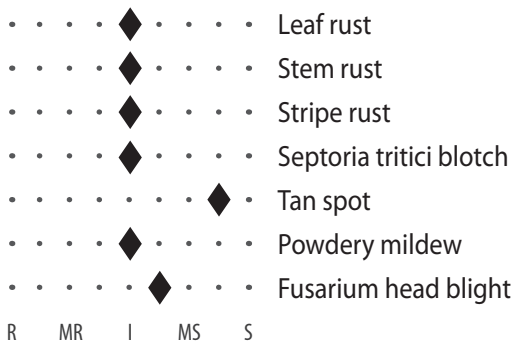
Strengths: Wide adaptability across western Kansas, great yield record (similar to KS Dallas), good standability and quality. Resistance to WSMV (65F) and to Triticum mosaic virus (TriMv).

Weaknesses: Medium-short coleoptile. Intermediate to acid soils. Moderately susceptible to stripe rust.

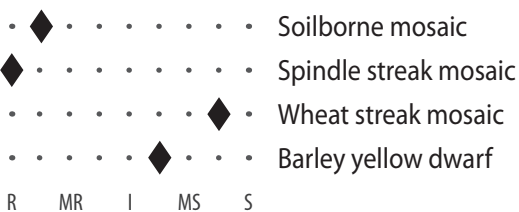
Comments: Medium maturity, medium-tall variety with potential to replace many current red wheats such as Tatanka, Oakley CL, KS Dallas, and KS Hamilton. Resistance to WSMV and TriMv giving it one of the strongest virus packages available in western Kansas.

KS Western Star

Fungal diseases

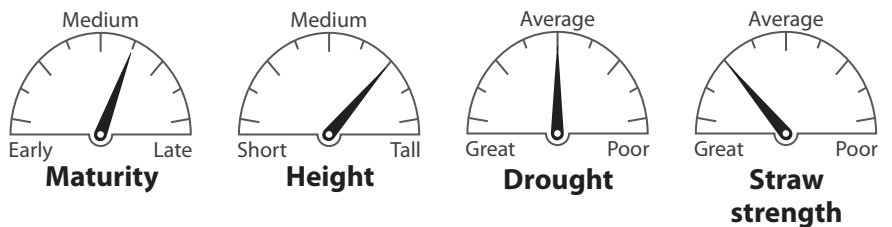


Viral diseases



R = Resistant; MR = Moderately resistant; I = Intermediate; MS = Moderately susceptible; S = Susceptible

Agronomic characteristics



Pedigree: Byrd and KS05HW121-2.

Adaptation: Central and western Kansas.

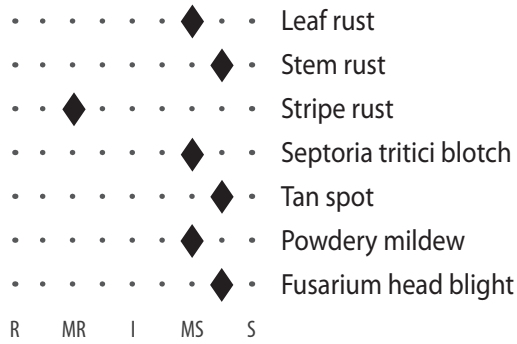
Strengths: High yield potential, good drought tolerance and straw strength, partial resistance to wheat curl mites.

Weaknesses: Susceptible to wheat streak mosaic virus and Hessian fly, intermediate for leaf and stripe rust.

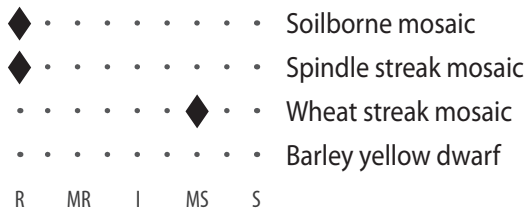
Comments: A variety from the K-State Hays wheat breeding program with promising yield performance in western Kansas. Its tolerance to soil borne mosaic virus allows it to perform in central Kansas as well. Medium to medium-early maturity and medium-tall stature. Named after the Western Star Milling Company in Salina, Kansas, this variety has good milling and baking qualities.

Langin

Fungal diseases

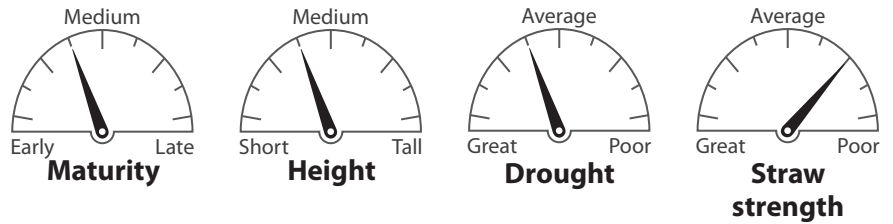


Viral diseases



R = Resistant; MR = Moderately resistant; I = Intermediate; MS = Moderately susceptible; S = Susceptible

Agronomic characteristics



Pedigree: Byrd and a University of Colorado experimental line containing Hatcher.

Adaption: Western Kansas.

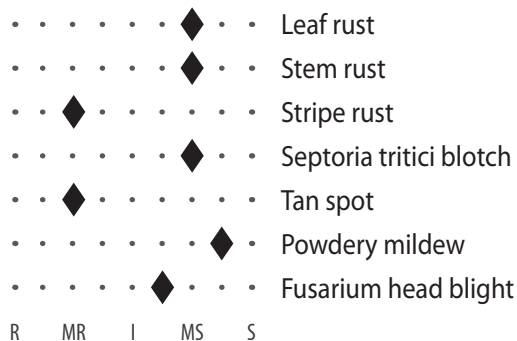
Strengths: Drought tolerance, stripe rust resistance, and partial resistance to wheat curl mites. Good milling and baking characteristics.

Weaknesses: Susceptible to leaf rust and stem rust.

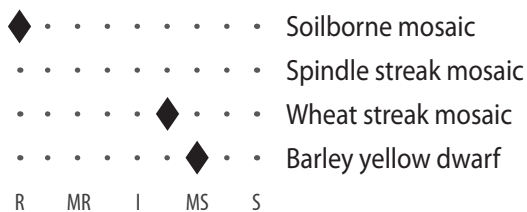
Comments: Early maturing variety with above-average drought tolerance and a good yield record in western Kansas. Langin has better stripe rust resistance than Byrd or Avery, but it is vulnerable to leaf rust and stem rust. Resistance to wheat curl mite could help slow the spread of wheat streak mosaic.

LCS Revere

Fungal diseases

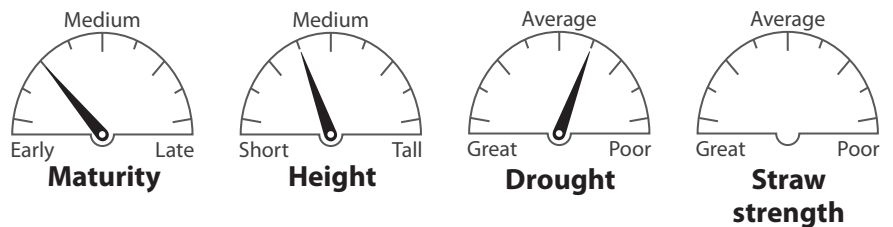


Viral diseases



R = Resistant; MR = Moderately resistant; I = Intermediate; MS = Moderately susceptible; S = Susceptible

Agronomic characteristics



Pedigree: T158 progeny.

Adaption: Central and western Kansas.

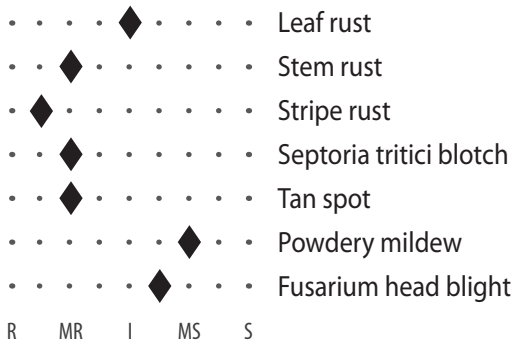
Strengths: Early emergence with high tillering potential, above average stripe rust resistance, moderately susceptible to scab, soilborne mosaic resistance.

Weaknesses: Weak on leaf rust. Acceptable milling and baking qualities.

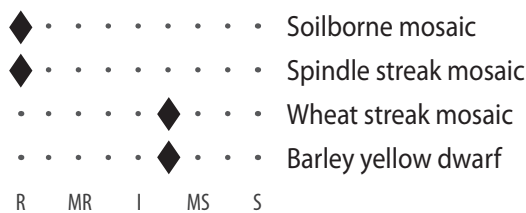
Comments: A medium-short variety with agronomics similar to T158 with a broader adaptation due to improved acid soil tolerance. Certified seed only (CSO).

Rockstar

Fungal diseases

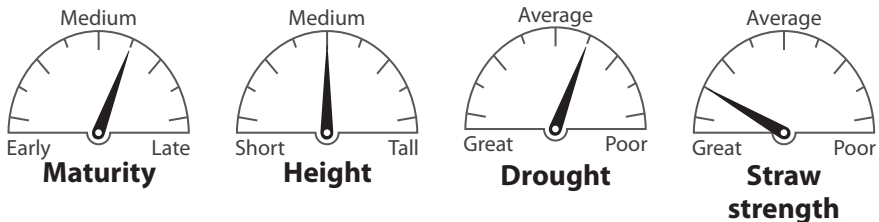


Viral diseases



R = Resistant; MR = Moderately resistant; I = Intermediate; MS = Moderately susceptible; S = Susceptible

Agronomic characteristics



Pedigree: Fuller, Cutter, Greer, and experimental varieties.

Adaption: Central and eastern Kansas.

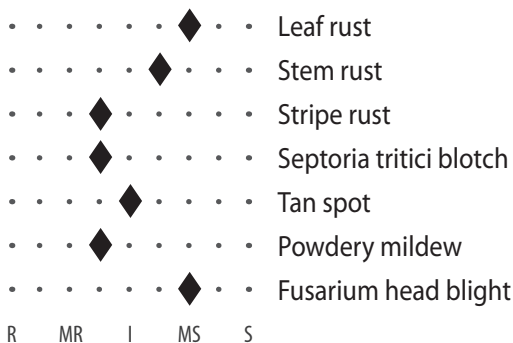
Strengths: Great yield record in central and eastern Kansas, excellent overall leaf health with good resistance to stripe rust, tan spot, and Septoria tritici blotch. Good straw strength and good tolerance to acid soils.

Weaknesses: Average test weight.

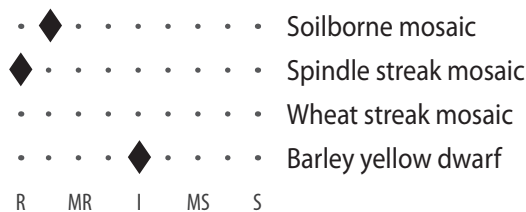
Comments: A medium height, medium to medium-late maturing variety (a day earlier than SY Monument) that has shown good performance in central and eastern Kansas. It maintains an extended green canopy coverage well into the grain filling period when other varieties are already showing yellowing of the lower leaves.

Showdown

Fungal diseases

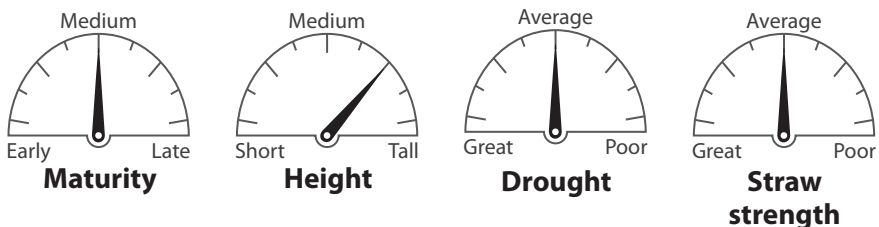


Viral diseases



R = Resistant; MR = Moderately resistant; I = Intermediate; MS = Moderately susceptible; S = Susceptible

Agronomic characteristics



Pedigree: OK Rising and Agripro experimental varieties.

Adaption: South central and central Kansas.

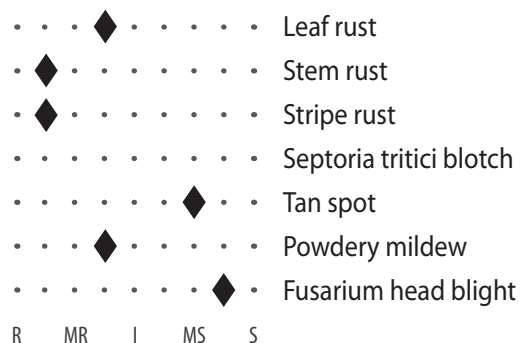
Strengths: High yield potential, Hessian fly resistance, good acid soil tolerance.

Weaknesses: Moderate susceptibility to leaf and stem rust, taller variety with potential for lodging, below average forage production compared to other OGI varieties.

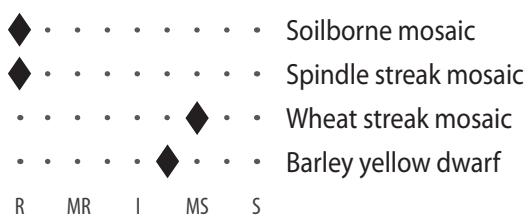
Comments: A 2018 release from Oklahoma State, Showdown has medium maturity and a wide adaptability, potentially as far north as central Kansas. While it shows a good recovery from grazing, it requires a greater seeding rate if the intent is forage production.

Smith's Gold

Fungal diseases

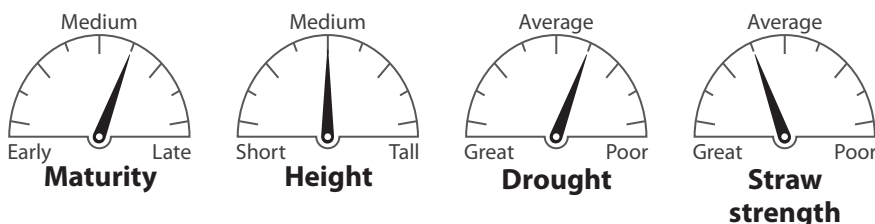


Viral diseases



R = Resistant; MR = Moderately resistant; I = Intermediate; MS = Moderately susceptible; S = Susceptible

Agronomic characteristics



Pedigree: Gallagher, Oklahoma experimental lines containing TAM 110 and 2174.

Adaption: South central and Southwest Kansas.

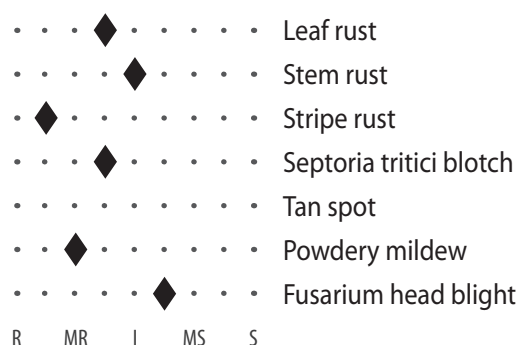
Strengths: Grazing potential, stripe rust resistance. Good acid soil tolerance, improved Hessian fly and greenbug resistance, excellent milling and baking characteristics.

Weaknesses: Susceptible to tan spot, physiological leaf spot and preharvest sprouting, intermediate tolerance to acid soils.

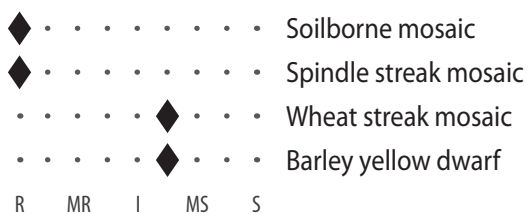
Comments: Solid wheat variety for south central Kansas with good grazing potential. May offer some improvements over Gallagher on stripe rust resistance and duration of spring grazing.

Strad CL Plus

Fungal diseases

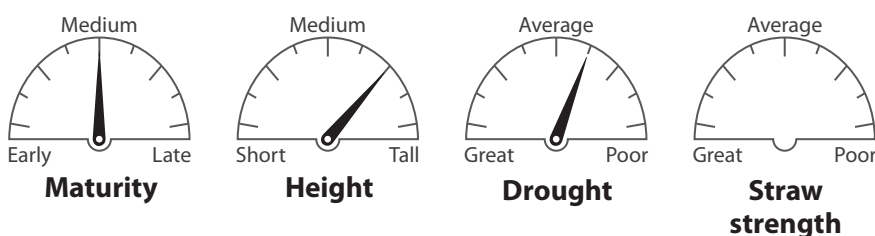


Viral diseases



R = Resistant; MR = Moderately resistant; I = Intermediate; MS = Moderately susceptible; S = Susceptible

Agronomic characteristics



Pedigree: N91D2308-13/OK03926C//OK03928C.

Adaptation: Oklahoma into south central Kansas.

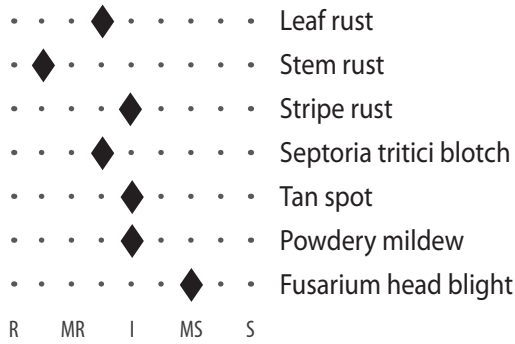
Strengths: Good fall growth and early canopy cover for grazing. Good milling and baking properties. Good performance on acid soils. Resistant to stripe rust, moderately resistant to leaf rust.

Weaknesses: Standability can be a concern in very high yielding environments. Susceptible to Hessian fly.

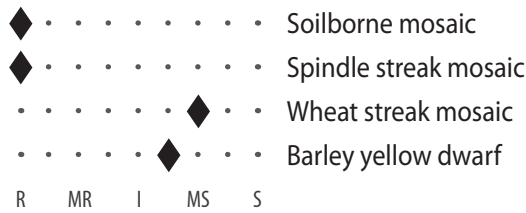
Comments: This medium-tall, medium maturity Clearfield variety is being positioned as a replacement for its sibling variety, Doublestop CL Plus. It has slightly earlier maturity and has shown 5 to 10% greater yields in Oklahoma. It has good test weight, although not as good as Doublestop CL Plus.

SY Monument

Fungal diseases

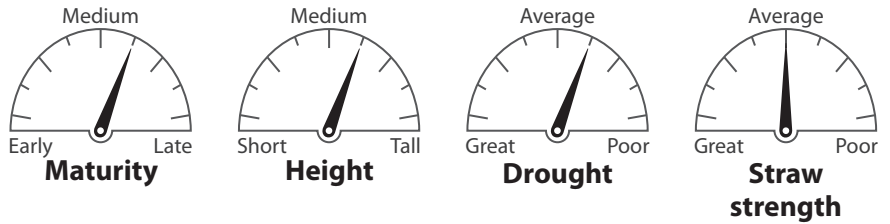


Viral diseases



R = Resistant; MR = Moderately resistant; I = Intermediate; MS = Moderately susceptible; S = Susceptible

Agronomic characteristics



Pedigree: AgriPro experimental lines.

Adaptation: Central and western Kansas, potential wide adaptation across the state.

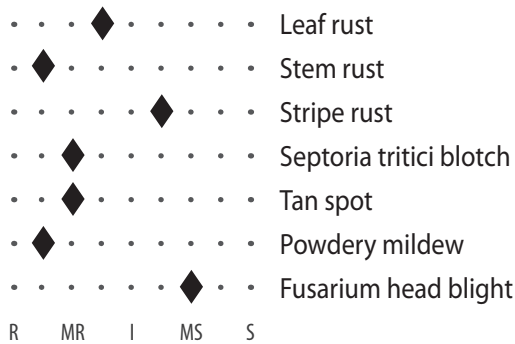
Strengths: Good disease package, good test weight, high tillering potential, wide adaptation across the state.

Weaknesses: Average straw strength, moderate susceptibility to wheat streak mosaic virus.

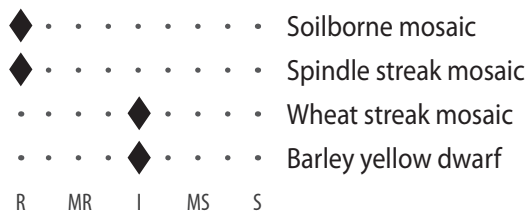
Comments: Excellent yield record across Kansas, although its medium-late maturity suggests it is best adapted for northern Kansas. The stripe rust and leaf rust ratings were downgraded to intermediate in 2019. A good option following soybeans in north central Kansas, because the later planting may reduce the risk of lodging.

SY Wolverine

Fungal diseases

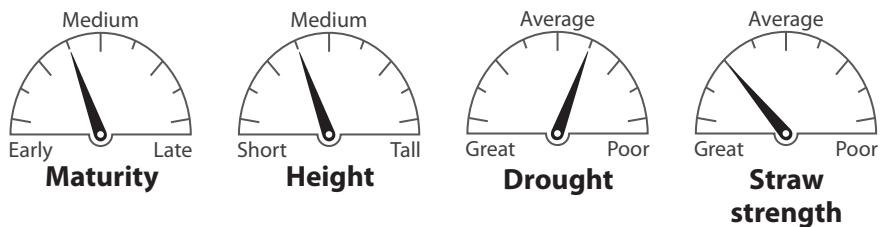


Viral diseases



R = Resistant; MR = Moderately resistant; I = Intermediate; MS = Moderately susceptible; S = Susceptible

Agronomic characteristics



Pedigree: SY Wolf, Platte, Everest.

Adaptation: Central and western Kansas.

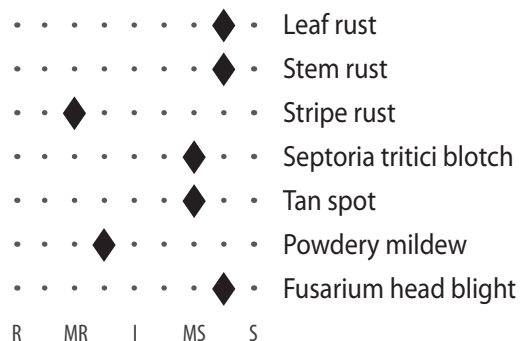
Strengths: Strong resistance package for leaf spotting diseases, excellent straw strength, and good drought tolerance.

Weaknesses: Susceptibility to acid soils, average baking quality, susceptibility to stripe rust.

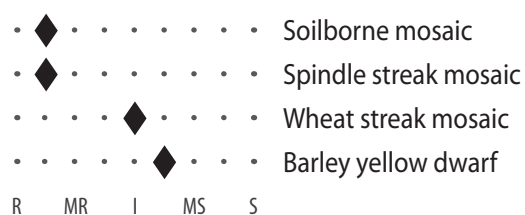
Comments: An early maturing variety. Medium-short stature shows great yield potential. A broad area of adaptation. Its great standability makes it a good candidate for irrigation. Leaf spotting disease resistance makes it a good option for wheat after wheat. Can show leaf tip dieback (browning of the flag leaf tip). Its acid soil susceptibility can restrict its use in some central Kansas fields.

T158

Fungal diseases

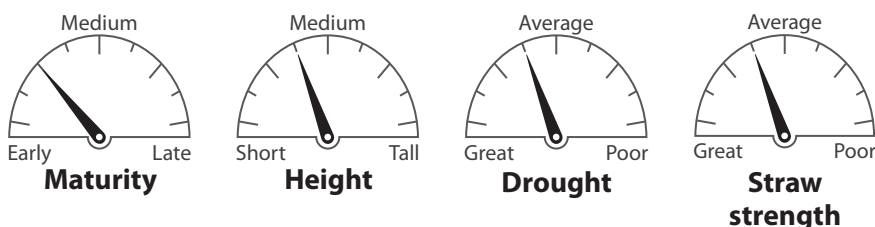


Viral diseases



R = Resistant; MR = Moderately resistant; I = Intermediate; MS = Moderately susceptible; S = Susceptible

Agronomic characteristics



Pedigree: Kansas experimental lines and T81.

Adaptation: Central and western Kansas.

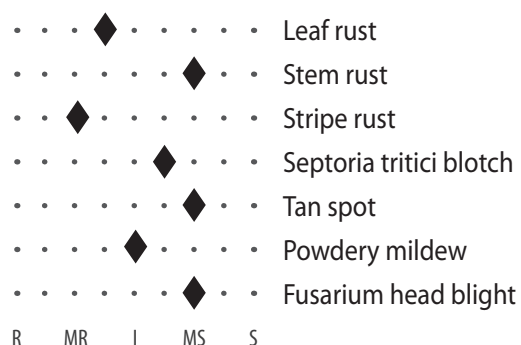
Strengths: Good drought tolerance, yield stability, adult plant resistance to stripe rust, intermediate resistance to wheat streak mosaic.

Weaknesses: Susceptible to acid soils, leaf rust, and stem rust.

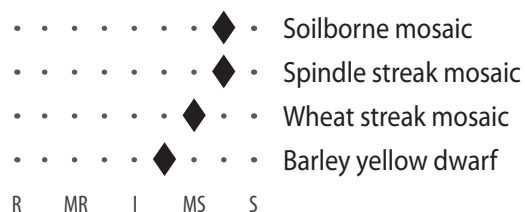
Comments: A good yield record in southwest Kansas and has done well in parts of central Kansas in recent years. Stripe rust resistance is most effective after the heading stages of growth. Generally considered to have good drought tolerance.

TAM 114

Fungal diseases

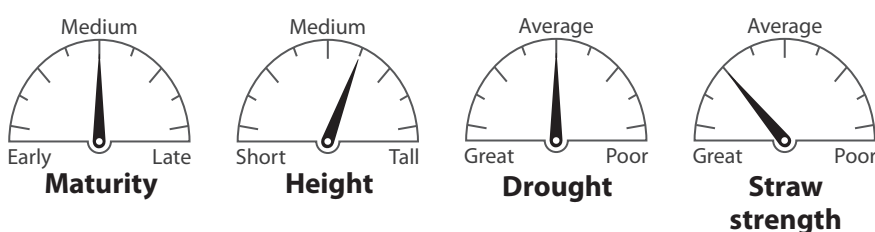


Viral diseases



R = Resistant; MR = Moderately resistant; I = Intermediate; MS = Moderately susceptible; S = Susceptible

Agronomic characteristics



Pedigree: TAM 111, Texas experimental lines, and TAM 200.

Adaptation: Western Kansas.

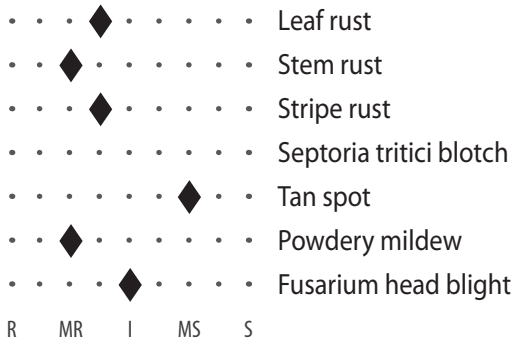
Strengths: Good drought tolerance, moderately resistant to leaf rust and stripe rust, good milling and baking characteristics.

Weaknesses: Moderately susceptible to wheat streak mosaic and stem rust.

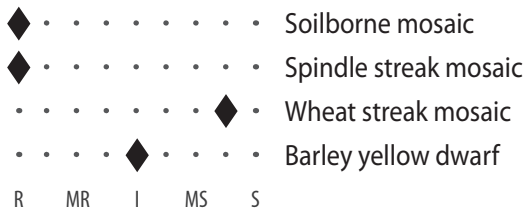
Comments: A good yield record in western Kansas. Drought tolerance similar to TAM 111 but better resistance to stripe and leaf rusts. Its stripe rust resistance has been more effective after heading. Good grazing potential with forage yield potential comparable to Duster. More damage from the 2020 spring freeze than other varieties, but this related to earlier maturity and not lack of winter hardiness.

WB4269

Fungal diseases

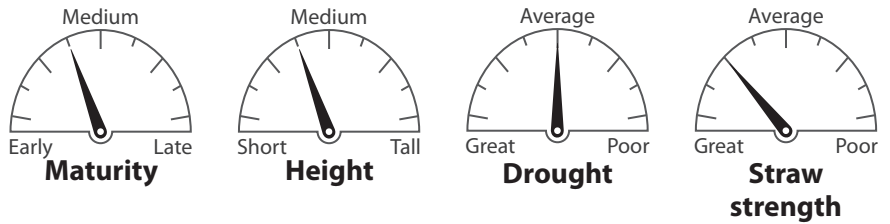


Viral diseases



R = Resistant; MR = Moderately resistant; I = Intermediate; MS = Moderately susceptible; S = Susceptible

Agronomic characteristics



Pedigree: NA.

Adaptation: Central and eastern Kansas.

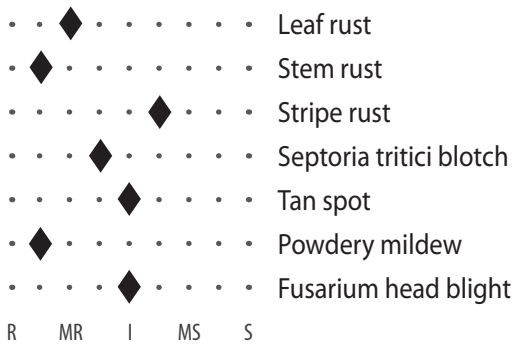
Strengths: Improved Fusarium head blight resistance, good yield potential, excellent straw strength, good leaf rust and stripe rust resistance.

Weaknesses: Susceptible to wheat streak mosaic virus.

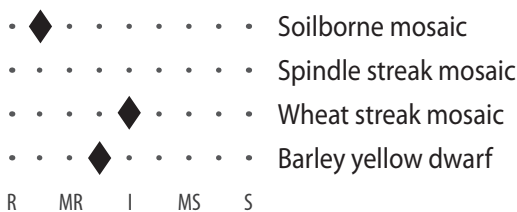
Comments: Above average yield record in central and eastern Kansas. A good early-maturing option to be planted after corn because of its intermediate resistance to Fusarium head blight. It is a certified seed only (CSO) variety.

WB4699

Fungal diseases

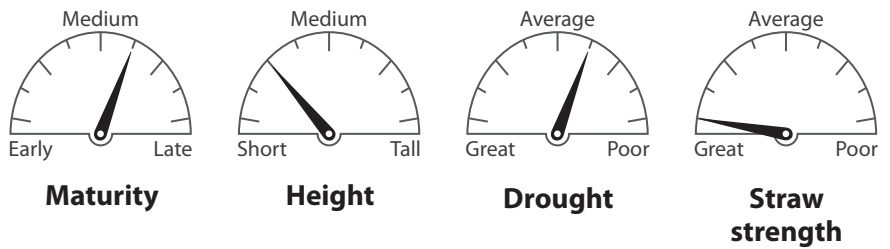


Viral diseases



R = Resistant; MR = Moderately resistant; I = Intermediate; MS = Moderately susceptible; S = Susceptible

Agronomic characteristics



Pedigree: Duster, Jagger, TAM 111, SY Wolf.

Adaptation: Central and eastern Kansas.

Strengths: Great yield potential, strong performance in central and eastern Kansas, intermediate for Fusarium head blight, excellent straw strength, good leaf rust resistance.

Weaknesses: Moderate susceptibility to stripe rust, lack of acid soil tolerance, short.

Comments: Has a very strong yield record in central and eastern Kansas since its first evaluation in 2019. A good late-maturing option after corn. Holds dormancy for a long period during the winter, so it might avoid some early spring freezes. Does not do well under drought stress so area of adaptation does not extend far west of I-35.

Appendix 1. Overall listing of disease and insect reactions.

Hard Red Winter Wheat^a												
Variety	Spindle		Wheat	Barley	Leaf	Stem	Stripe	Septoria		Tan	Fusarium	
	Soilborne	Streak	Streak	Yellow				Tritici	Powdery		Head	Hessian
	Mosaic	Mosaic	Mosaic	Dwarf	Rust	Rust	Rust	Blotch	Spot	Mildew	Blight	Fly^b
AG Icon	1	1	7	7	3	2	5		6	6	7	
AM Cartwright	1	1	7	5	4	2	4		3		7	2
AP Bigfoot	5	5	7	5	5	1	7	5	5		6	9
AP EverRock	1	1	7	4	4	2	6	7	7	2	6	8
AP Roadrunner	1	1	5	4	4	8	5	6	7	2	7	2
Armour	1	1	7	6	5	3	7	6	5	2	7	9
Avery	1	1	5 ^e	7	8	8	8		7	3	7	9
Bentley	1	1	6	5	5	2	5		6	6	7	9
Bob Dole	1	1	8	7	3	2	4	4	4	6	6	8
Butler's Gold	1	1		7	3		2	5		6		9
Byrd	2	2	5 ^e	7	8	8	8		7	3	7	9
Canvas	6	7	3 ^e	6	6	2	4		5			8
Duster	1	1	7	4	3	3	5	7	7	3	8	1
Everest	1	1	7	4	3	3	8	5	7	3	4	5
Gallagher	1	1	7	6	3	3	3	5	7	6	7	1
Green Hammer	2	1		5	3	2	5	4	5	7	8	5
Guardian	9	9	3 ^{de}	7	7	3	5					9
High Country	1	1	5	7	5	2	8	4	6	4	8	9
Jagalene	2	3	6	7	9	2	5	4	7	9	8	6
Jagger	2	4	5	7	9	3	5	3	4	7	7	8
KanMark	1	1	6	6	2	3	6	6	6	7	8	9
Karl/Karl 92	1	3	9	8	8	6	5	5	3	4	6	9
KS Ahearn	1	1	8	6	3	4	5	5	5	5	8	9
KS Dallas	6	8	2 ^d	5	3	2	6		8	7		7
KS Hamilton	1		2 ^d	6	5	3	7	7	7	8	7	1
KS Hatchett	1	1	9	6	3	2	7	6	6	8	8	2
KS Providence	1	1	6	5	3	4	5	5	4	4	6	9
KS Territory			4 ^d	6	4	3	7		6		6	2
KS Western Star	2	1	8 ^e	6	5	5	5	5	8	5	6	9
Langin	1	1	7 ^e		7	8	3	7	8	7	8	8
Larry	1	1	6	7	7	2	5	6	5	5	7	9
LCS Chrome	1	1	7	7	2	3	5	4	4	6	7	1
LCS Julep	1	1	6	5	7	4	7	6	6		6	2
LCS Mint	1	1	6	7	7	6	5	5	5	6	8	9
LCS Revere	1		6	7	7	7	3	7	3	8	6	8
LCS Valiant	1	1	8	5	6	7	6		6	8	6	1
Overlay	1	4	5	5	8	2	4	5	5	7	9	8
Paradise	1	1	6	7	5	3	2		4		7	9
Rockstar	1	1	6	6	5	3	2	3	3	7	6	
Showdown	2	1		5	7	6	4	4	5	4	7	1
Smith's Gold	1	1	7	6	4	2	2		7	4	8	2
SY Monument	1	1	7	6	4	2	5	4	5	5	7	6
SY Rugged	1	1	7	8	5	2	2	7	7	7	7	8
SY Wolf	2	1	6	6	2	2	6	3	3	5	7	7

Appendix 1. Overall listing of disease and insect reactions.

Hard Red Winter Wheat^a

Variety	Spindle		Wheat	Barley	Leaf	Stem	Stripe	Septoria		Fusarium		Hessian Fly ^b
	Soilborne Mosaic	Streak Mosaic	Streak Mosaic	Yellow Dwarf				Tritici Blotch	Tan Spot	Powdery Mildew	Head Blight	
SY Wolverine	1	1	5	5	4	2	6	3	3	2	7	
T158	2	2	5 ^e	6	8	8	3	7	7	4	8	9 ^c
TAM 111	8	8	7	7	8	3	8	6	6	6	7	8
TAM 112	8	8	5 ^e	7	8	3	8	5	6	1	8	9
TAM 114	8	8	7	6	4	7	3	6	7	5	7	5 ^c
Tatanka	1	1	7	5	6	2	2	7	7	7	7	9
Uncharted	1	1	9	2	4	1	6	4	5	3	7	8
WB4269	1	1	8	5	4	3	4		7	3	5	7
WB4401	2		7	5	4	1	3	4	5	4	5	4
WB4422	2	2	6		3	1	8	5	4	4	6	6
WB4458	1	1	6	6	7	1	4	7	5	7	9	9
WB4462	1	1	7	5	6	4	7	6	7	7	6	9
WB4515	1	1	7	5	6	3	6	6	5		8	
WB4523	3	1	7		5	4	4		3	2		6
WB4595			5	4	4	2	5	6	6	6	6	8
WB4699	2		5	4	3	2	6	4	5	2	5	5
WB4792	9		5	4	2	2	6		7	7	9	4
WB-Grainfield	1	1	8	7	6	2	7	6	6	6	7	8 ^c
Whistler	2	1	2 ^e	7	7	2	6		5	3	7	8
Winterhawk	1	1	6	5	7	8	6	7	6	5	7	8
Zenda	1	1	7	5	3	2	6	4	5	4	4	5

Hard White Winter Wheat^a

Variety	Spindle		Wheat	Barley	Leaf	Stem	Stripe	Septoria		Fusarium		Hessian Fly ^b
	Soilborne Mosaic	Streak Mosaic	Streak Mosaic	Yellow Dwarf				Tritici Blotch	Tan Spot	Powdery Mildew	Head Blight	
Antero	4	4	7	7	7	2	6		5		6	4 ^c
Aspen	1	1	7	6	6	3	3	4	5	2	6	6 ^c
Danby	7		5	8	8	2	5	6	8	7	7	9
Joe	8	8	3 ^d	6	2	1	3	3	3	4	6	
KS Big Bow			4	6		2	5		7		8	9
KS Silverado	2	2	3	7	3	4	5			7	7	1
KS Venada	7		7	5	3	2	4	4	5	4	4	5
Snowmass	6		3 ^d	7	6	2	7	7			6	9

a Rating codes are: 1 – Highly resistant; 3 – Moderately resistant; 5 – Intermediate; 7 – Moderately susceptible; 9 – Highly susceptible. Blanks indicate insufficient information.

b Hessian fly ratings are based on results of greenhouse tests with Kansas (Great Plains) biotype of Hessian fly. Hessian fly populations are often a mixture of biotypes thus results can vary among years and locations.

c Indicates resistance has been inconsistent in greenhouse testing.

d This variety carries a resistance gene that confers temperature sensitive resistance to wheat streak mosaic virus.

e This variety carries a resistance gene to the wheat curl mite (the mite that transmits wheat streak mosaic virus and other wheat viruses).

Appendix 2. Overall listing of agronomic characteristics.

Hard Red Winter Wheat^a				
Variety	Maturity	Height	Drought Tolerance	Straw Strength
AG Icon	4	6	6	1
AM Cartwright	4	5	7	2
AP Bigfoot	4	5	6	
AP EverRock	4	4	8	3
AP Roadrunner	6	5	6	
Armour	2	3	7	3
Avery	7	7	4	5
Bentley	4	8	4	7
Bob Dole	4	8	7	5
Butler's Gold	3	4	8	
Byrd	6	7	4	6
Canvas	4	5	5	2
Duster	6	5	6	7
Everest	2	4	7	2
Gallagher	5	5	6	5
Guardian	6	7	5	4
Green Hammer	4	7		1
High Country	5	5	6	
Jagalene	5	5	5	3
Jagger	2	5	5	7
KanMark	4	3	5	1
KS Ahearn	4	5	6	3
KS Dallas	5	5	5	6
KS Hamilton	5	6	5	
KS Hatchett	3	5	6	7
KS Providence	5	6	5	
KS Territory	6	6	5	
KS Western Star	6	7	5	3
Langin	4	4	4	7
Larry	5	6	6	3
LCS Chrome	8	7	5	3
LCS Julep	7	6	5	
LCS Mint	7	8	4	6
LCS Revere	3	4	6	
LCS Valiant	4	5	6	4
Overley	2	7	6	3
Paradise	4	5	5	5
Rockstar	6	5	6	2
Showdown	5	7	5	5
Smith's Gold	6	5	6	4
SY Monument	6	6	6	5
SY Rugged	4	4	6	5
SY Wolf	7	6	5	3
SY Wolverine	4	4	6	3
T158	3	4	4	4
TAM 111	6	7	5	3
TAM 112	4	7	4	7
TAM 114	5	6	5	3
TAM 204	6	5		1
Tatanka	6	6	6	7

Hard Red Winter Wheat^a				
Variety	Maturity	Height	Drought Tolerance	Straw Strength
Uncharted	6	6	4	
WB4269	4	4	5	3
WB4401	4	5	7	5
WB4422	5	6	5	3
WB4462	4	7	6	6
WB4523	5	2	7	1
WB4595	5	6	6	1
WB4699	6	3	6	1
WB4792	6	6	4	2
WB-Grainfield	5	7	5	4
Winterhawk	5	7	4	3
Whistler	7	8	5	6
Zenda	4	5	7	3

Hard White Winter Wheat^a				
Variety	Maturity	Height	Drought Tolerance	Straw Strength
Antero	6	7	6	4
Aspen	2	2	7	1
Danby	7	7	5	6
KS Big Bow	3	7	5	
KS Silverado	4	5	5	1
KS Venada	6	3	5	5
Joe	7	8	4	4
Stardust	4	6		4

Clearfield Wheat Varieties^a				
Variety	Maturity	Height	Drought Tolerance	Straw Strength
AP503 CL2	5	5	5	3
Doublestop CL Plus	6	8	5	4
Oakley CL	7	7	5	6
Strad CL Plus	5	7	6	
SY 517 CL2	5	5	7	2
SY Achieve CL2	3	6	8	5

CoAXium Technology^a				
Variety	Maturity	Height	Drought Tolerance	Straw Strength
AP18 AX	4	6	7	
Crescent AX	3	6	4	8
LCS Atomic AX	3	5	7	5
LCS Helix AX	5	6	6	7
LCS Photon AX	6	7	7	7
LCS Steel AX	8	7	5	

^aMaturity: 1 = Early; 5 = Medium; 9 = Late
 Height: 1 = Short; 5 = Medium; 9 = Tall
 Drought tolerance: 1 = Excellent; 5 = Good; 9 = Poor
 Straw strength: 1 = Excellent; 5 = Good; 9 = Poor
 Blanks indicate insufficient information.
 (W) White wheat variety

Clearfield Technology

Clearfield technology is a non-genetically modified, herbicide-resistance technology for wheat and other crops developed by BASF. Varieties with this trait are resistant to Beyond (Imazamox) herbicide, which provides a broad spectrum of grass and broadleaf weed control. Beyond herbicide can help control winter annual grassy weeds, including downy brome, Japanese brome, cheat, and jointed goatgrass but provides only suppression of feral rye. Current Clearfield wheat varieties usually carry a two-gene resistance trait, meaning Beyond herbicide can be applied at the highest labeled rate in combination with methylated seed oil for improved weed control with a high degree of crop safety. Wheat varieties with Clearfield trait are certified seed only.

CoAXium Technology

The CoAXium wheat production system is a non-genetically modified, herbicide-resistant technology developed by Colorado State University containing AXigen trait conferring resistance to Aggressor (quizalofop-p-ethyl) herbicide. Aggressor herbicide has good foliar activity on winter annual grassy weeds (including feral rye) and can help control ALS-resistant biotypes. CoAXium varieties are currently available from Colorado State University or from Limagrain Cereal Seeds. CoAXium varieties are certified seed only.

Western-adapted CoAXium varieties: Battle AX, Buckhorn AX, Crescent AX, Incline AX, LCS Fusion AX

Broader-adapted CoAXium varieties: AP18 AX, LCS Atomic AX, LCS Helix AX, LCS Photon AX, LCS Steel AX

Herbicide Resistant Wheat Varieties^a

Variety	Spindle		Wheat	Barley	Leaf	Stem	Stripe	Septoria		Fusarium		
	Soilborne Mosaic	Streak Mosaic	Streak Mosaic	Yellow Dwarf				Rust	Tritici Blotch	Tan Spot	Powdery Mildew	Head Blight
Clearfield Technology												
AP503 CL2	2	5	6	7	8	2	5	4	7	7	7	6
Byrd CL Plus	2	2	5	7	8	8	8		7	3	7	
Doublestop CL Plus	1	1	6	6	3	2	3	6	6	5	8	9
Oakley CL	7	7	3 ^d	6	5	2	4	5	6	2	5	9
Strad CL Plus	1	1	6	6	4	5	2	4		3	6	9
SY 517 CL2	1		5	7	4	2	6	4	3	6	6	
SY Achieve CL2	1	1	7	7	5	2	5	7	6	5	7	9
CoAXium Technology												
AP18 AX	6	6	4	5	8	3	3	4	4		8	6
LCS Atomic AX	3	3	7	6	6	9	3					
LCS Helix AX	3	3	6	7	8	2	5			3		
LCS Photon AX	3	1	6	6	7	9	3	6	6	3		
LCS Steel AX	1	1		7	7	8	7				6	9

- a Rating codes are: 1 – Highly resistant; 3 – Moderately resistant; 5 – Intermediate; 7 – Moderately susceptible; 9 – Highly susceptible. Blanks indicate insufficient information.
- b Hessian fly ratings are based on results of greenhouse tests with Kansas (Great Plains) biotype of Hessian fly. Hessian fly populations are often a mixture of biotypes thus results can vary among years and locations.
- c Indicates resistance has been inconsistent in greenhouse testing.
- d This variety carries a resistance gene that confers temperature sensitive resistance to wheat streak mosaic virus.
- e This variety carries a resistance gene to the wheat curl mite (the mite that transmits wheat streak mosaic virus and other wheat viruses).

K-STATE

Research and Extension

Brand names appearing in this publication are for product identification purposes only. No endorsement is intended, nor is criticism implied of similar products not mentioned.

Acknowledgments: Thanks to Jeff Ackerman, Bob Bowden, Myron Bruce, Ming Chen, John Fellers, Allan Fritz, JP Michaud, Jessica Rupp, and Guorong Zhang.

Publications from Kansas State University are available at www.bookstore.ksre.ksu.edu.

Contents of this publication may be freely reproduced for educational purposes. All other rights reserved. In each case, credit Kelsey Andersen Onofre et al., *Kansas Wheat Variety Guide 2023*, Kansas State University, July 2023.

Kansas State University Agricultural Experiment Station and Cooperative Extension Service

K-State Research and Extension is an equal opportunity provider and employer. Issued in furtherance of Cooperative Extension Work, Acts of May 8 and June 30, 1914, in cooperation with the U.S. Department of Agriculture, Director of K-State Research and Extension, Kansas State University, County Extension Councils, Extension Districts.