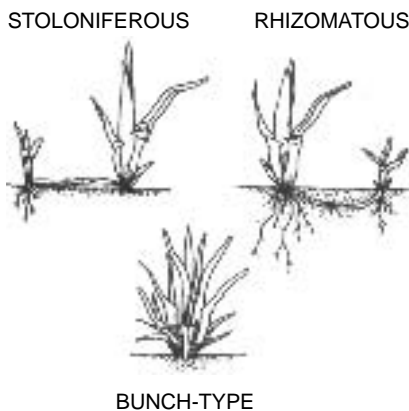
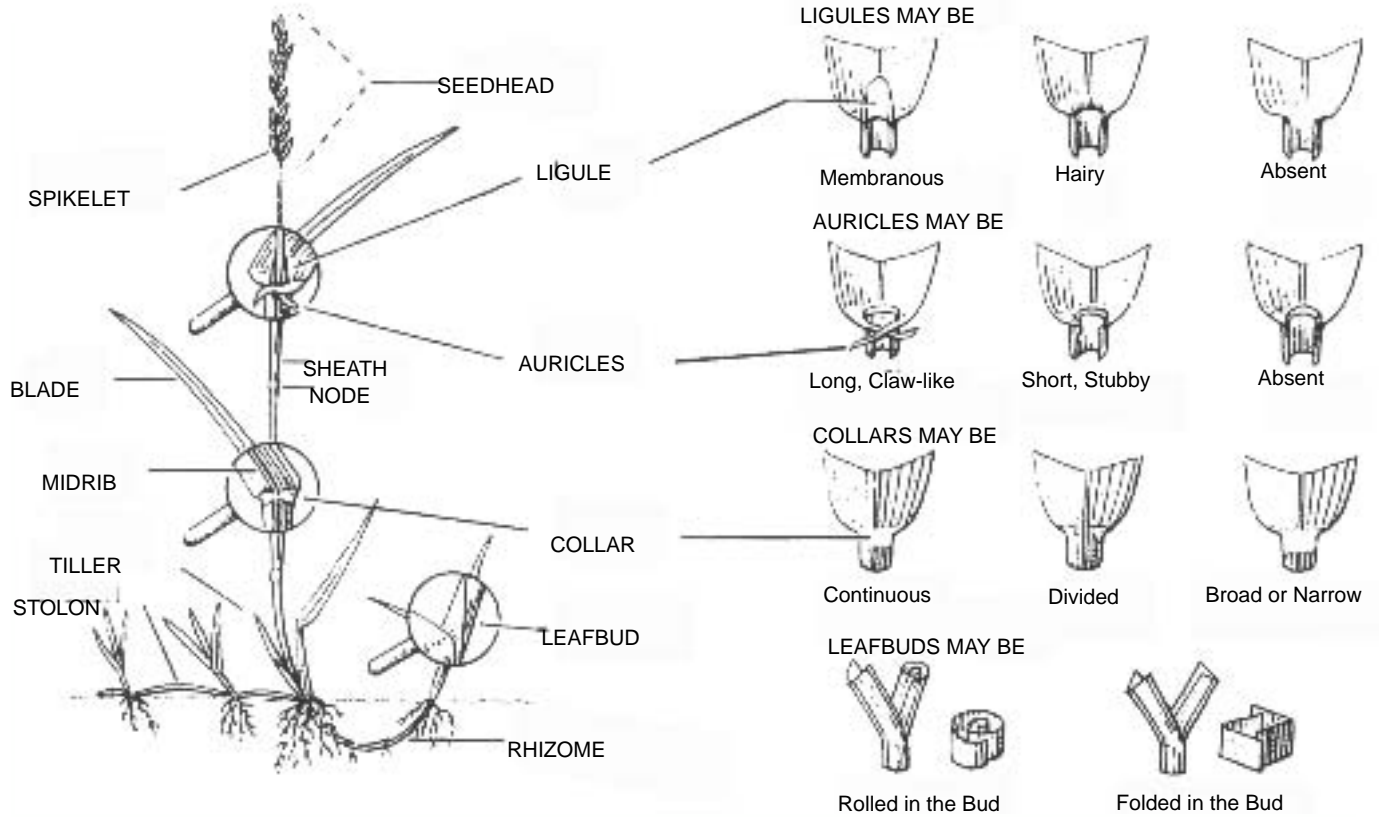




# Turfgrass Identification



**T**urfgrass identification is an important, but sometimes difficult, aspect for correct management of the turf. Seedheads are the main feature in identifying grasses, but they are not present in mowed turf, so it is necessary to learn identification by vegetative characteristics.

A 10X or 15X hand lens is helpful when looking for small parts that distinguish various grasses. If uncertain about the identification of a turfgrass, take a sample to the local K-State Research and Extension office, or send it to the state turfgrass specialist at Kansas State University. Fresh samples should be submitted for accurate identification.